

DOWN TO DRESSING ROOMS AND CROSSOVER		
Cyc	39	
OPEN	38	
OPEN	37	
OPEN	36	
ELEX #6 (CYC)	35	
OPEN	34	
US TRAV/5TH LEGS	33	
OPEN	32	
6TH BORDER	31	
OPEN	30	
ELEX #5	29	
OPEN	28	
US MOVING LIGHTS	27	
5TH BORDER	26	
4TH LEGS	25	
OPEN	24	
ELEX #4	23	
DIVA SHELL #4	22	
4TH BORDER	21	
ROLL DROP SCRN	20	
MS TRAV/3RD LEGS	19	
OPEN	18	
ELEX #3	17	
DIVA SHELL #3	16	
3RD BORDER	15	
OPEN	14	
Moving Light Electric	13	
2ND LEGS	12	
ELEX #2	11	
DIVA SHELL #2	10	
2ND BORDER	9	
OPEN	8	
OPEN	7	
OPEN	6	
ELEX #1	5	
DIVA SHELL #1	4	
1ST LEGS	3	
1ST BORDER	2	
MAIN CURTAIN	1	
PORTAL HEADER	1	

Light

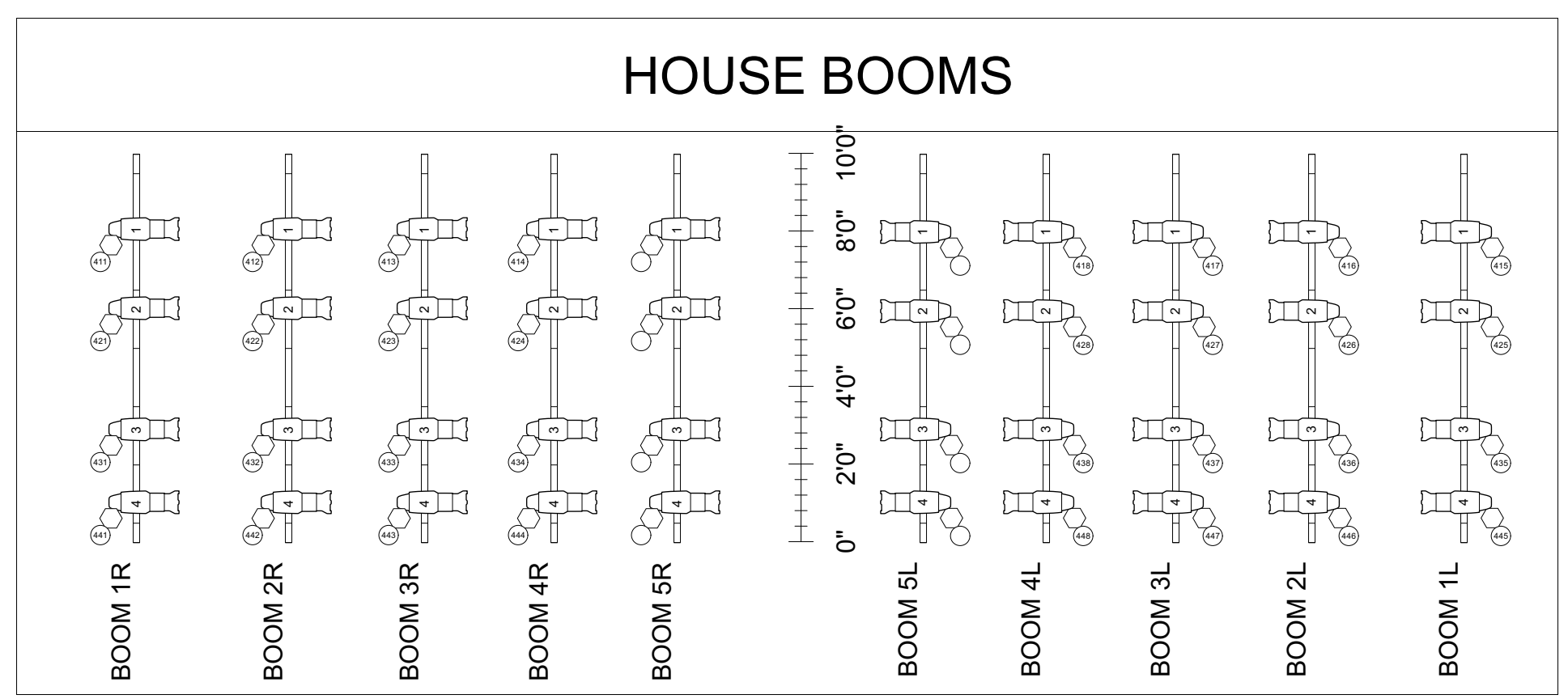
- Altman SS-Cyc 100
- NSI Colortran 5/50 10deg
- ETC Source4 10deg
- ETC Source4 14deg
- ETC Source4 19deg
- ETC Source4 26deg
- ETC Source4 36deg
- ETC Source4 PAR MFL
- ETC Source4 PAR WFL

Moving Light

- GLP Impression X4
- Martin MAC Viper Profile

Typical

Color Summary



VIRGINIA G PIPER THEATRE
 SCOTTSDALE CENTER FOR THE PERFORMING ARTS
 REP LIGHTING PLOT and LINESSET SCHEDULE
 SCALE: 1/4" = 1' DRAFTED BY: ZACH C
 As Of: 1/23/2019 Plate 1 of 1

