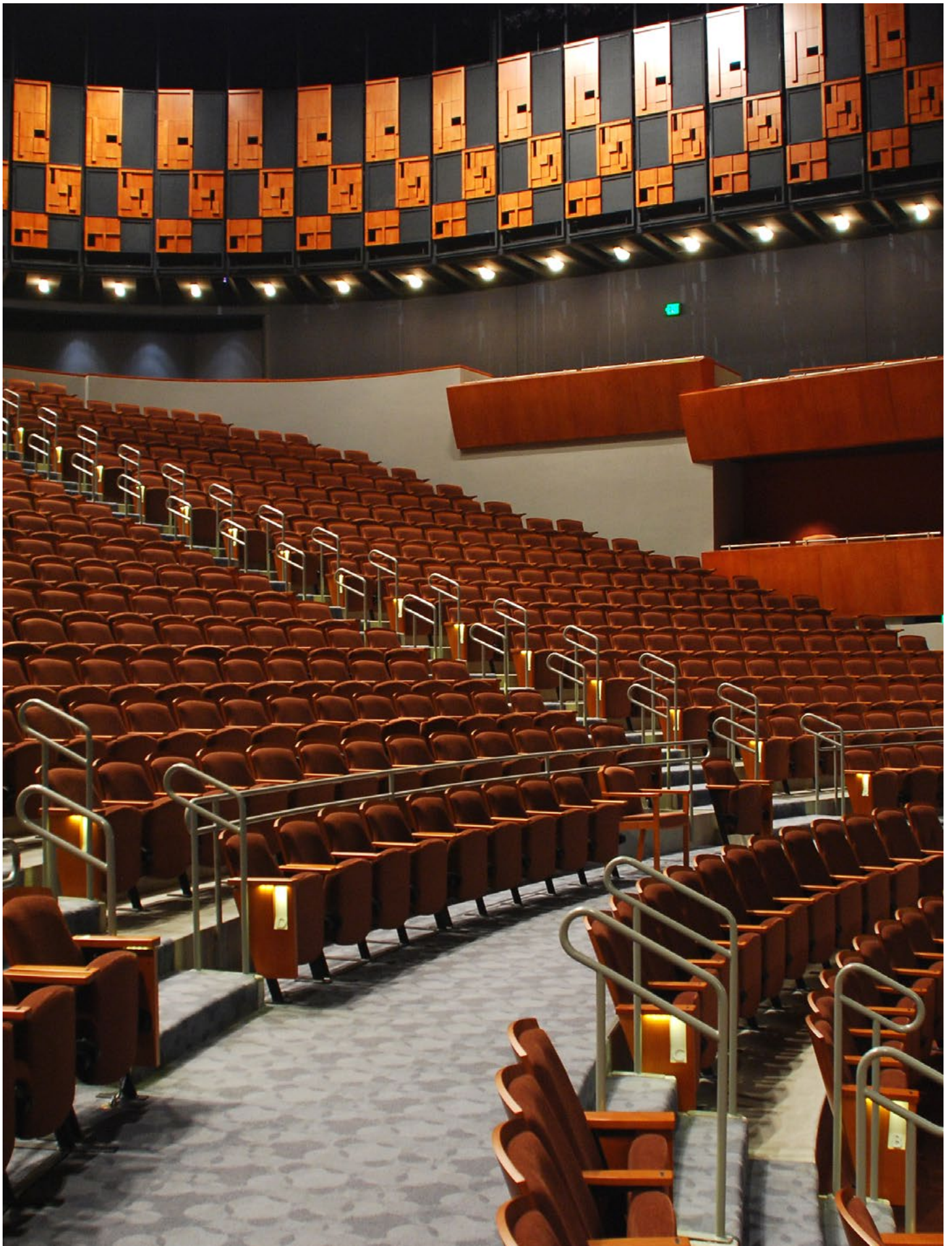


Scottsdale Center for the Performing Arts
VIRGINIA G. PIPER THEATER
TECHNICAL INFORMATION

arts
scottsdale





- I. Contact**
- II. Facility**
- III. Stage**
- IV. Lighting**
- V. Audio**
- VI. Video and Projection**
- VII. Policies**
- VIII. Artist Services**
- IX. Supplemental
Documentation**

Scottsdale Center for the Performing Arts
7380 East Second Street
Scottsdale, Arizona 85251

Rev: 2023-08-A

I. CONTACT

Administration: 480-874-4610

(A) Tech Advance & General Tech Inquiries:

Zach Ciaburri, Director of Production	480-874-4628	ZachC@ScottsdaleArts.org
Dorann Matson, Production Manager	623-255-9421	DMatson@ScottsdaleArts.org

(B) Technical Department Staff:

John Doyle, Master Electrician	480-874-4624	JohnD@ScottsdaleArts.org
Tyler Goddard, Stage Manager	480-874-4623	TylerG@ScottsdaleArts.org
JJ Hansen, Technical Theatre Coordinator	480-874-4619	JHansen@ScottsdaleArts.org
Paige Lockwood, Artist Services	480-544-3434	PaigeL@ScottsdaleArts.org
Lauran Conran, Production Assistant		LauranC@ScottsdaleArts.org

(C) Important Contacts:

Abbey Messmer, Programming Director	480-874-4661	AbbeyM@ScottsdaleArts.org
Meribeth Reeves, Managing Director	480-874-4681	MeribethR@ScottsdaleArts.org
Luis Payan, Box Office Manager	480-874-4690	LuisP@ScottsdaleArts.org
Diandra Adamczyk, Senior Prog. Coordinator	480-874-4672	DiandraA@ScottsdaleArts.org
Anne Parker, Facility Rentals Manager	480-874-4604	AnneP@ScottsdaleArts.org

II. FACILITY

(A) Virginia G. Piper Theater

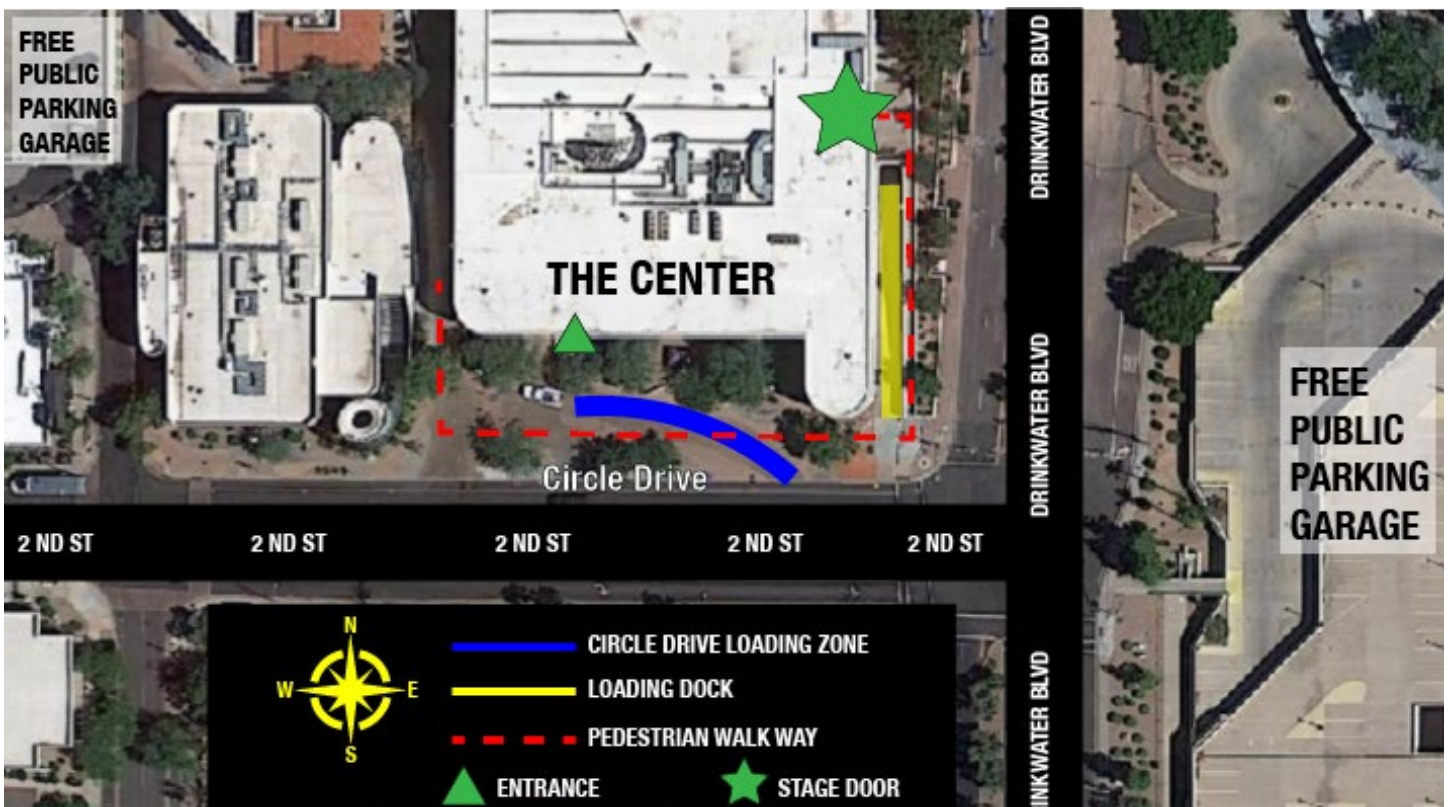
- The Virginia G. Piper Theater is an 853-seat proscenium style theater.
- Originally built in 1975, the stage and the house were renovated in 2009.

(B) Stage Door

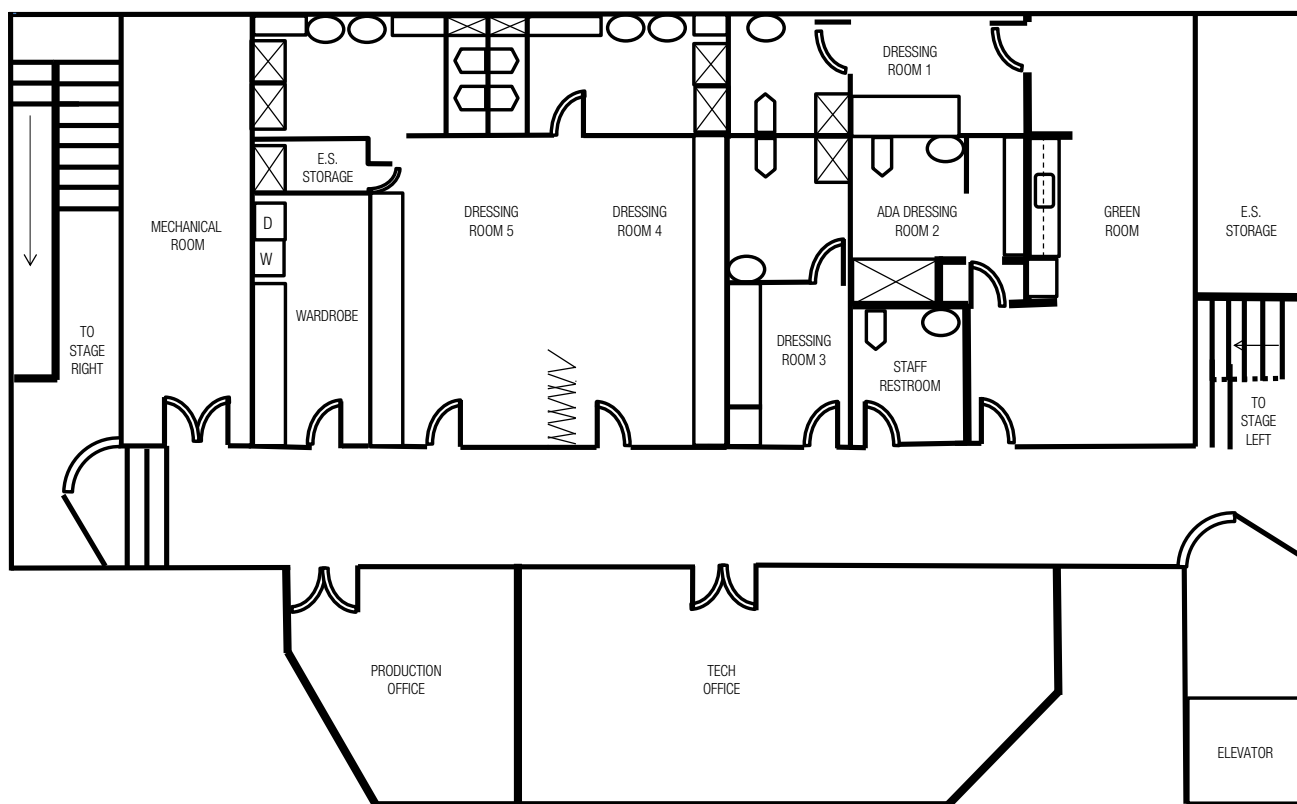
- The Virginia G. Piper Theater does not have a “stage door” proper. There is a secure backstage entrance located along Drinkwater Boulevard. See image below. Prior arrangements must be made for secure entry.
- Alternatively, the loading dock can be utilized for secure entry.

(C) Loading Dock

- The loading dock for the Virginia G. Piper Theater is located on the north west corner of Drinkwater Boulevard and Second Street.
- The loading dock entrance is a 300 foot long narrow tunnel at an approximate grade of 20 degrees. It can accommodate up to a single 53 foot truck.
- The dock is at a standard height of 3 feet x 5 inches.



Parking and Loading Diagram



(D) Dressing Rooms

Dressing rooms are located on “A” level, which is one level below the stage. “A” level is accessible by stairwells on stage left and stage right and by the elevator on stage left.

#1	Star	Max 3 persons	1 Toilet and 1 Shower	100 sq. ft.
#2	Star	Max 3 persons	1 Toilet and 1 Shower	75 sq. ft.
#3	Star	Max 3 persons	1 Toilet and 1 Shower	70 sq. ft.
#4	Chorus	Max 12 persons	2 Toilets and 2 Showers	200 sq. ft.
#5	Chorus	Max 12 persons	2 Toilets and 2 Showers	200 sq. ft.

- “A” level dressing rooms are accessible to wheelchairs. For ease in access, dressing room #2 is recommended for occupants in wheelchairs and is outfitted for ADA compliancy.
- No more than fifty (50) people are permitted on the dressing room level at any given time. This includes performers and all backstage assistants. This policy is enforced according to Fire Safety Code, established by the Scottsdale Fire Marshall.
- Dressing rooms #1 and #2 are accessed through the greenroom.
- Dressing rooms #4 and #5 can be separated by a movable partition creating one large room when convenient.

(E) Greenroom

The greenroom is located on “A” level near the dressing rooms, which are one level below the stage. The greenroom is equipped with a small kitchen including a refrigerator, a microwave, and a sink.

(F) Wardrobe

- The wardrobe room is located on “A” level, which is one level below the stage. Our wardrobe room is small but contains one (1) washer and one (1) dryer that are available for use.
- We have two steamers on site and one sewing machine.

(G) Stage Manager Position

- The standard stage manager position at the Virginia G. Piper Theater is located just off stage right. If operation for your show must be in a different location prior arrangement should be made.

The stage manager position is equipped with:

- 1 Standing Desk/Workstation
- 1 Computer
- 2 Computer monitors
 - Monitor 1: full stage color, full stage infrared, house cams
 - Monitor 2: computer
- 1 Wired communication
- 1 Wireless communication
- 1 Backstage paging mic
- Various spike and gaff tape

(H) Tech Booth

- The technical booth at the Virginia G. Piper Theater is located in a standard position behind the last row of the audience.
- The technical booth is the standard operating position for the lighting console and our projectors.
- The technical booth can be accessed through an audience vestibule on house right.
- The technical booth contains a ladder to the follow spot booth.

(I) FOH Mix Position

- The standard and only position is located at the back of the hall, uninhibited by any walls, windows, or overhangs.
- There is available space for touring consoles and gear. Advance notification is preferred.

(J) Monitor Mix Position

- The standard monitor mix position in the Virginia G. Piper Theater is located off stage right.
- Due to limitations of space on stage left we do not advise its use as a monitor mix position. However, it is possible given advance notification.

(K) Follow Spot Booth

The follow spot booth is located above the technical booth.

It is accessible via a ladder in the booth or by elevator and a short walk through the catwalks.

(L) Power Services

The Virginia G. Piper Theater has five (5) additional power services available.

Advanced notice is advised if you intend to use any additional power services.

Location	Amperage	Termination	Status
FOH, South Portal	200 AMP – 3 Phase	Camlock	Available
Down Stage Right	200 AMP – 3 Phase	Camlock	Available, used for audio/video due to isolated neutral/ground
Off Stage Right	200 AMP – 3 Phase	Camlock	Available, shared with house motor distro
USR Gallery	400 AMP – 3 Phase	Camlock	Available, shared with house moving lx distro
HL Cat #1	100 AMP – 3 Phase	Camlock	Available, motor power

(M) Grand Piano

- The Virginia G. Piper Theater has one (1) Steinway Concert D Grand Piano available for use. The piano is in excellent condition and is used by world class musicians throughout our season. The use of the grand piano requires advanced notification.
- We utilize a contracted piano tuner and need two weeks' notice to schedule them. The piano can only be tuned to A=440

III. STAGE

(A) General Information

The Virginia G. Piper Theater stage is approximately 60 ft. wide x 30 ft. deep.

The standard leg opening in our venue is set to 40 ft. (20 ft. off center)

The stage floor is a sprung floor with no rake.

(B) Crossover

Due to the limitations of depth on our stage level, the standard crossover for the Virginia G. Piper Theater is located one level beneath the stage. There are stairwells located on stage right and stage left, no more than 15 ft. from sight lines.

(C) Orchestra Shell and Ceiling

The Virginia G. Piper Theater is home to a full orchestra shell including ceiling and walls. Due to the modular nature of this equipment; we have the option to create anything from a chamber shell to full stage symphony. Advance notification is required.

(D) Marley Dance Flooring

The Virginia G. Piper Theater has three (3) options for Marley dance flooring: white, gray, or black.

All three options are able to cover the full stage.

Advance notification is required.



IV. LIGHTING

(A) Console

Primary: ETC Gio 4k with 2x40 fader wing

Secondary: ETC Ion 2000 with 1x40 fader wing

RFR: in house iPad for use with ETC RFR App

Note: The standard control is in the technical booth, other accommodations require advance notice.

(B) Dimmers and Circuits

- The Virginia G. Piper Theater is equipped with a total of 512 dimmers.
- ETC Sensor+ Racks: DMX/ETC Net3 DMX compatible over ethernet

FOH

Location	# of Dimmers	Location	# of Dimmers
Cat 1	36	HR & HL Cove	12, each
Cat 2	36	HR & HL Box Boom	15, each
Cat 3	36	Balcony Rail	12
Cat 4	24		

STAGE

Location	# of Dimmers	Location	# of Dimmers
SR Gallery	240, (40 multi drops)	DSL Wall	6
SL Gallery	24, (4 multi drops)	USR Wall	18
DSR Wall	6	DSR Wall	18

(C) House Lights

- The Virginia G. Piper Theater houselights can be controlled through various Paradigm panels located throughout the theater or controlled via lighting console.

(D) House Lighting Plot

- The Virginia G. Piper Theater has a robust house lighting plot that is able to accommodate the majority of our productions without alteration. If your production requires alterations to the house plot advanced notification is suggested.
- PDFs and various draftings can be found at ScottsdalePerformingArts.org/about/technical-specifications.

V. AUDIO

(A) Main Theater Sound System

FOH Console

AVID SC48

Avid VENUE Pack 3 and Waves Platinum Plug-ins

FWx Card for 32 channel multi-track recording and playback (please contact for further information)

Left Array

(8) L'Acoustics KARAI

(2) L'Acoustics SB18 Subwoofer

Right Array

(8) L'Acoustics KARAI

(2) L'Acoustics SB18 Subwoofer

Center Array

(4) L'Acoustics ARCS WIFO Wide

Front Fills

(8) L'Acoustics 5XT

- Our main theater sound system is powered by L'Acoustics X12 and X4 Amplified controllers. The system has been tuned by L'Acoustics. The systems tuning processors are not able to be modified.

(B) Surround System

- Our surround system utilizes the SB18 Subwoofers from both the left and right arrays as well as the center array of the main theater sound system. Additionally, eight (8) L'Acoustics 108P self-powered loudspeakers are mounted around the perimeter of the house. This makes for the capability of a 9.1 surround system. Processing is done using a BARCO AP-24 surround sound processor.

(C) Monitor System

Monitor Console

AVID SC48

Monitor Inventory

8 EAW SM200iH (2" HF x 12" LF) Bi-amped

2 EAW SM200iV (2" HF x 12" LF) Bi-amped

4 EAW JH15 (1.4" HF x 15" LF) Bi-Amped

4 Meyer Sound UPA (Permanently flown stage left and stage right, 2 per side)

Bi-amp mixes (Crown Macrotech and Microtech amplifiers with dbx DriveRack Processing)

(D) Audio Lines and House Snake

- Main house snake is analog 40 inputs, 12 returns, 2 isolated transformer splits.
- Guest snakes and cables can be pulled through a tunnel/trough located stage right and received at FOH Mix Location. The distance is approximately 100 ft.

(E) Wireless Microphone System

10 Shure ULX-D4 Receivers – H50 Band 534-597Mhz

10 ULX-D2 Handheld Microphone Transmitters with SM58 Capsules

10 ULX-D1 Bodypack Transmitters

- Our wireless microphone system is networked for frequency coordination with Shure Wireless Workbench.
- For additional wireless microphone capsules and lavaliers, please see our microphone inventory.

(F) Microphone Inventory

- Please download the inventory list located at ScottsdalePerformingArts.org/about/technical-specifications.

VI. VIDEO AND PROJECTION

(A) Cinema DCP Projector

- Barco DP2K-20C with Touch Panel (networked for WebCommander control)
- Alchemy lamp TLD+Lens (4.17 - 6.95:1 WUXG(A)
- Barco ImagePro-II Video Switcher

*Use of this system requires advanced notice.

(B) Alternative Projector

- Barco HDXW12 12K Lumens
- Barco TLD+ Ultra Lens 0.8 - 1.16 R9801414

Inputs

DVI - I (HDCP including analog RGB YUV)

SDI/HDSI/dual HDSI/3G/Barco Link

*Use of this system requires advanced notice.

(C) Projection Surfaces

Permanent Roll-Drop Screen

- Stewart Ultramatte 130 with Cineperf 27'9" W x 15'9" H (diagonal measurement: 32')
- Aspect Ratio 1.78:1

Rear Projection Screen

- Da-Lite Da-Tex Rear Projection Screen with Fast and Fold / Da-Tex Complete 40521
- Screen 21 ft. 5 inches x 16 ft. 4 inches (diagonal measurement: 27 ft.) Aspect ratio: 1.33:1

(D) Presentation Video Playback System

- Our presentation video system can be set up either stage left or stage right to allow for operation of video from stage. Signal is sent to the control booth via an Extron HDMI-Fiber Extender.

Standard Playback Equipment

Roland V60HD Video Switcher

Roland V1HD Video Switcher

MacBook Pro with Touch-bar 15" 2018 Model

Dell XPS 9500 15" Laptop

Figure 53 Qlab, Microsoft PowerPoint, Apple Keynote

Bluetooth Remote Clicker

USB Remote Clicker

Black Magic ATEM Mini

Mac Books

1 Mac Book with M2 Pro Chip

1 Mac Book with M2 Chip

VII. POLICIES

(A) Labor

- The Virginia G. Piper Theater does not have contracted labor through the IATSE union, but we do follow general industry standards. Please note that these are guidelines and coordination with the venue production manager is essential. Due to the nature of our industry we require a minimum of two weeks' notice for labor needs.
- We take a meal break between 4–5 hours of work. At 5 hours, technicians must receive a meal break. The meal break can take the form of an unpaid 1-hour break or a 30 minute paid and catered break.
- It is venue policy to have a four-person crew minimum. This usually manifests as one (1) stage manager, one (1) audio engineer, one (1) lighting, and one (1) stage hand.
- It is venue policy that Scottsdale Arts technicians will be required to operate or supervise operation of any Scottsdale Arts owned equipment.

(B) Photography and Recording

- Policy: Photography, videography, and all other recording within Scottsdale Center for the Performing Arts' facilities are not permitted without the artist's and the Center's advance permission.
- The Virginia G. Piper Theater does not have the capability to provide a video archival.
- The Virginia G. Piper Theater does have the capability to provide an audio capture from the board, but advance coordination is necessary. This is not a paid service and thus we cannot guarantee quality or success of the recording.
- For any public performance or rehearsal with audience, camera positions are restricted to areas of non-egress and must conform to ADA accessibility laws and requirements. All camera positions must be approved by technical staff.

(C) Sound Limits

- The Virginia G. Piper Theater enforces a maximum SPL limit of 99dBA measured from the FOH mix location. We find that our typical audience enjoys their experience in the theater with an SPL in the range of 85-95dBA
- Scottsdale Arts production staff reserves the right to adjust overall program SPL as they deem appropriate.

(D) Curfew

- Scottsdale Arts has a general curfew of midnight for artists, renters, and guests to be out of the building. Advance notification to the production manager can arrange for additional accommodation.

(E) Pyrotechnics and Special Effects

- Advance notification is needed for use of any pyrotechnics or other special effects.
- Pyrotechnics are considered, but not limited to any flame (open or enclosed) including candles and incense, any explosive equipment or material, sparklers, fireworks, smoke, fog, cigarettes/cigars/pipes, or firearms.
- The Virginia G. Piper Theater has a strict policy against glitter, snow, sand, and helium balloons.
- Use of any pyrotechnic or special effect will require the use of posted signs for audience awareness.

(F) Food and Beverage

- No food or beverage, other than water, is permitted on stage, backstage, or in the house.
- It is strictly against our policy for anyone to bring alcohol from outside onto the Scottsdale Arts campus.

(G) Scenery and Props

- All scenery, props, and decorations must be fire-retardant. Documentation must be available.
- We do not have storage facilities and therefore may not be able to accept early delivery of equipment, nor can it be stored at the termination of the event. All scenery and equipment must be removed from the building immediately following the event.

(H) Animals

- Service dogs and/or performance animals only please. Advance notification is requested.

(I) General

- Blocking exists, fire extinguishers, and/or electrical panels is prohibited.
- Scottsdale Arts staff has the right to cease operation or production for any safety issues that may arise.
- Advance notification and coordination with production manager is required for all incoming productions and events.

VIII. ARTIST SERVICES

- Scottsdale Arts has a full artist services department and can accommodate many needs. For coordination of needs please contact artist services.
- For information regarding dressing rooms, greenroom, kitchen, hotels, restaurants, etc. please view our Touring Resource Guide located at ScottsdalePerformingArts.org/about/technical-specifications.

IX. SUPPLEMENTAL DOCUMENTATION

- For ease of use we have included the standard lineset schedule and seating chart within this document. For editable versions and further drawings, drafts, and documentation please visit ScottsdalePerformingArts.org/about/technical-specifications.

LINESET SCHEDULE

#	STANDARD HOUSE HANG	FEET	METERS	WEIGHT (lbs)	MAX TRIM	NOTES
*	Portal Legs	-1'-0"	-0.30	MAX		
1	Portal Header	0'-5"	0.13	1000	27' 0"	Hard-framed header
*	Main Curtain - motorized	1'-1"	0.33	MAX		Braille Curtain
2	1st Border	1'-9"	0.53	600	27' 0"	59'W x 5'H
3	1st Legs	2'-5"	0.74	400	7' 0"	25'H x 10'W
4	1st Orch Shell	3'-1"	0.94	MAX		Cannot be moved
5	1st Electric	4'-5"	1.35			
6		5'-1"	1.55			
7		5'-9"	1.75			
8		6'-5"	1.96			
9	2nd Border	7'-1"	2.16	600	27' 0"	59'W x 5'H
10	2nd Orch Shell	7'-9"	2.36	MAX		Cannot be moved
11	2nd Electric	9'-1"	2.77			
12	2nd Legs	9'-9"	2.97	400	7' 0"	25'H x 10'W
13	ACL/Mover Electric	10'-5"	3.18			
14		11'-1"	3.38			
15	3rd Border	11'-9"	3.58	600	27' 0"	59'W x 5'H
16	3rd Orch Shell	12'-5"	3.78	MAX		Cannot be moved
17	3rd Electric	13'-9"	4.19			
18		14'-5"	4.39			
19	MS Traveler/3rd Legs	15'-1"	4.60	MAX	7' 0"	59'W x 25'H (bi-part) Cannot be moved
20	Roll-drop Screen	15'-9"	4.80	MAX		Cannot be moved
21	4th Border	16'-5"	5.00	600	27' 0"	59'W x 5'H
22	4th Orch Shell	17'-1"	5.21	MAX		Cannot be moved
23	4th Electric	18'-5"	5.61			
24		19'-1"	5.82			
25	5th Border	20'-5"	6.22	600	27' 0"	59'W x 5'H
26	4th Legs	19'-9"	6.02	400	7' 0"	25'H x 10'W
27	Mover Electric	21'-1"	6.43			
28		21'-9"	6.63			
29	5th Electric	22'-5"	6.83			
30		23'-1"	7.04			
31	6th Border	23'-9"	7.24	600	27' 0"	59'W x 10'H
32		24'-5"	7.44			
33	US Traveler/5th Legs	25'-1"	7.65	MAX	7' 0"	59'W x 25'H (bi-part) Cannot be moved
34		25'-9"	7.85			
35	6th Electric - Cyc	26'-5"	8.05			
36		27'-1"	8.25			
37		27'-9"	8.46			
38		28'-5"	8.66			
39	Cyc	29'-9"	9.07	800	27' 0"	59'W x 25'H

- This lineset schedule indicates typical House configuration. Advanced notification and clearance is required should changes be desired.
- **THIS IS NOT A FULL-FLY HOUSE.** Fly-system is DOUBLE PURCHASE. Maximum pipe weight is 1400lbs and maximum arbor weight is 2800lbs. Flying pipes out of weight is not acceptable. ALL battens max out trim or "grid" at 32'.
- Proper industry standard and rated rigging hardware is required for all scenery and items hanging overhead. SCPA has limited stock in hardware, please contact the Production Manager for coordination.

SEATING CHART

