

Cyc	39
OPEN	38
OPEN	37
ELEX #6 (CYC)	36
OPEN	35
US TRAV/5TH LEGS	34
OPEN	33
6TH BORDER	32
OPEN	31
ELEX #5	30
OPEN	29
US MOVING LIGHTS	28
5TH BORDER	27
4TH LEGS	26
OPEN	25
ELEX #4	24
DIVA SHELL #4	23
4TH BORDER	22
ROLL DROP SCRN	21
MS TRAV/3RD LEGS	20
OPEN	19
ELEX #3	18
DIVA SHELL #3	17
3RD BORDER	16
OPEN	15
Moving Light Electric	14
2ND LEGS	13
ELEX #2	12
DIVA SHELL #2	11
2ND BORDER	10
OPEN	9
OPEN	8
OPEN	7
ELEX #1	6
DIVA SHELL #1	5
1ST BORDER	4
1ST LEGS	3
MAIN CURTAIN	2
PORTAL HEADER	1

KEY

Altman SS-Cyc 100

Martin Mac Aura

NSI Colortran 5/50 10deg

Martin MAC Viper Profile

ETC Source4 10deg

USITT Practical

ETC Source4 14deg

ETC Source4 19deg

ETC Source4 26deg

ETC Source4 36deg

ETC Source4 PAR WFL

LEGEND

COLOR

-----> L202 + R119

LENS SIZE

-----> 1

UNIT NUMBER

-----> 888

DIMMER/ADDRESS

-----> 888

CHANNEL

-----> 888

SHOW NOTES

VENUE NOTES

SCOTTSDALE ARTS

PRODUCTION STAFF

ZACH CIABURRI.....DIRECTOR OF PRODUCTION

DORANN MATSON.....PRODUCTION MANAGER

JJ HANSEN.....TECHNICAL THEATRE COORDINATOR

TYLER GODDARD.....HEAD LIGHTING ENGINEER

LUKE JACKSON.....HEAD AUDIO ENGINEER

GRACE DARLING.....STAGE MANAGER

LAURAN CONRAN.....PRODUCTION ASSISTANT

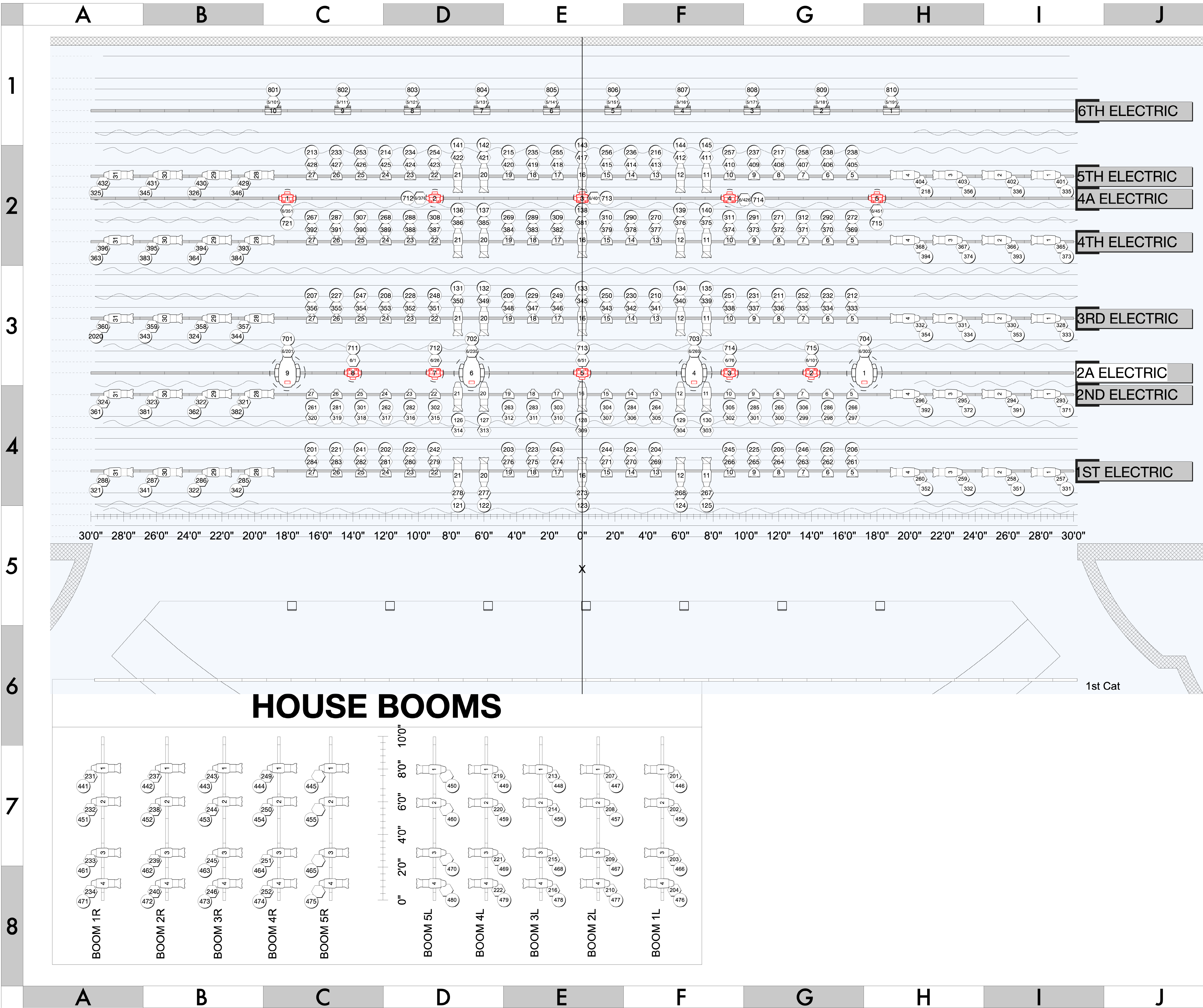
VIRGINIA G. PIPER THEATRE

SCALE:
unless otherwise noted

DRAWING #
1
of X

REV DATE:
6/1/2023

LIGHT PLOT



KEY

Altman SS-Cyc 100

NSI Colortran 5/50 10deg

ETC Source4 10deg

ETC Source4 14deg

ETC Source4 19deg

ETC Source4 26deg

ETC Source4 36deg

ETC Source4 PAR WFL

Martin Mac Aura

Martin MAC Viper Profile

USITT Practical

LEGEND

COLOR.....→L202 + R119

LENS SIZE.....→1

UNIT NUMBER.....→888

DIMMER/ADDRESS.....→888

CHANNEL.....→888

SHOW NOTES

VENUE NOTES

SCOTTSDALE ARTS

PRODUCTION STAFF

ZACH CIABURRI.....DIRECTOR OF PRODUCTION

DORANN MATSON.....PRODUCTION MANAGER

JJ HANSEN.....TECHNICAL THEATRE COORDINATOR

TYLER GODDARD.....HEAD LIGHTING ENGINEER

LUKE JACKSON.....HEAD AUDIO ENGINEER

GRACE DARLING.....STAGE MANAGER

LAURAN CONRAN.....PRODUCTION ASSISTANT

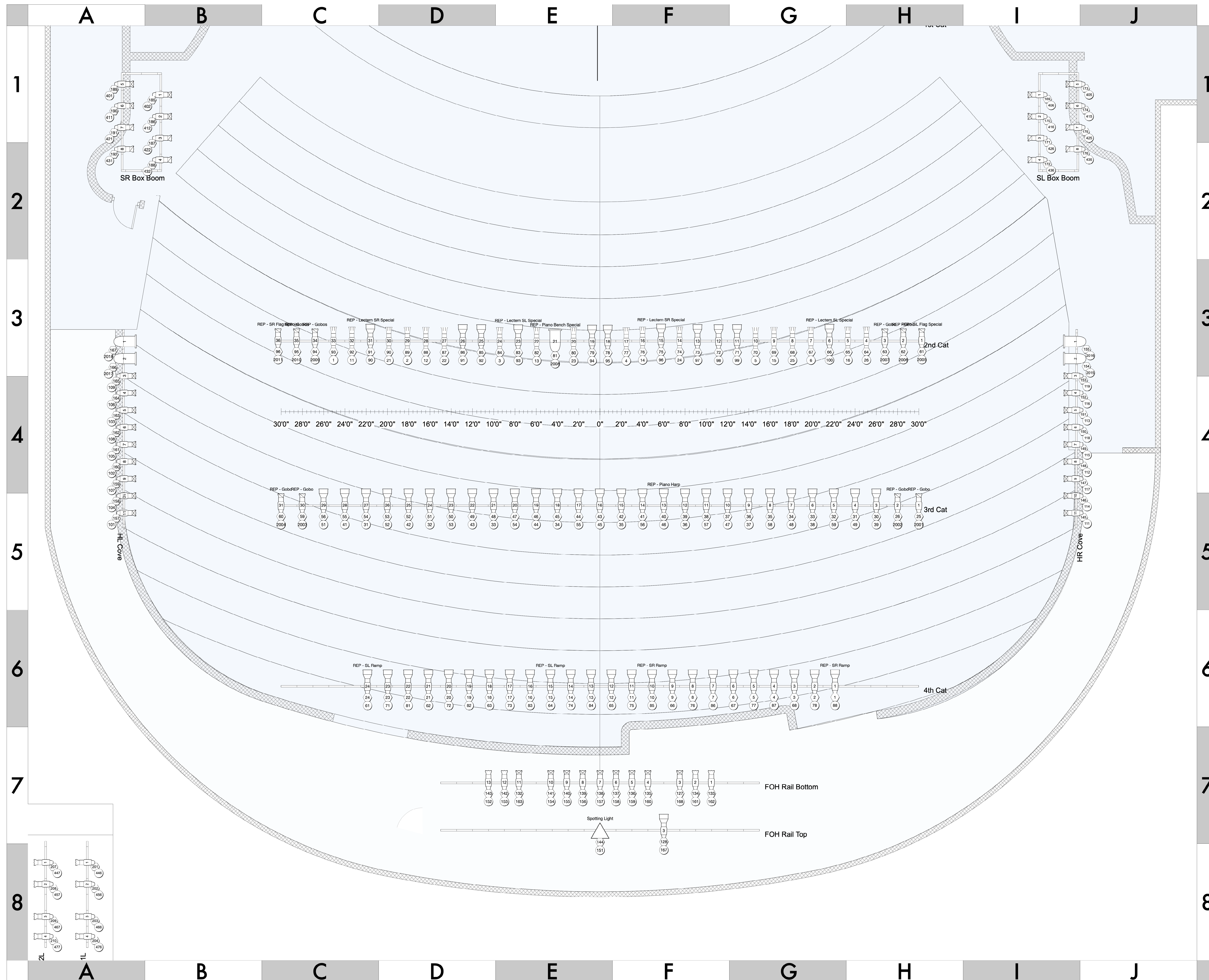
VIRGINIA G. PIPER THEATRE

SCALE: unless otherwise noted




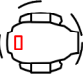


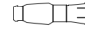




REV DATE: 6/1/2023

DRAWING # 1 of X

LIGHT PLOT



KEY

- | | | | |
|---|-----------------------------|---|-----------------------------|
|  | Alman SS-Cyc 100 |  | Martin Mac Aura |
|  | NSI Colortran 5/50
10deg |  | Martin MAC Viper
Profile |
|  | ETC Source4
10deg |  | USITT Practical |
|  | ETC Source4
14deg | | |
|  | ETC Source4
19deg | | |
|  | ETC Source4
26deg | | |
|  | ETC Source4
36deg | | |
|  | ETC Source4 PAR
WFL | | |

LEGEND

-
- Diagram illustrating the components of the LED strip light:
- COLOR: L202 + R119
 - LENS SIZE
 - UNIT NUMBER: 1
 - DIMMER/ADDRESS: 888
 - CHANNEL: 888

SHOW NOTES

VENUE NOTES

SCOTTSDALE ARTS

PRODUCTION STAFF

ZACH CIABURRI.....	DIRECTOR OF PRODUCTION
DORANN MATSON.....	PRODUCTION MANAGER
JJ HANSEN.....	TECHNICAL THEATRE COORDINATOR
TYLER GODDARD.....	HEAD LIGHTING ENGINEER
LUKE JACKSON.....	HEAD AUDIO ENGINEER
GRACE DARLING.....	STAGE MANAGER
LAURAN CONRAN.....	PRODUCTION ASSISTANT

VIRGINIA G. PIPER THEATRE

SCALE:
unless otherwise noted

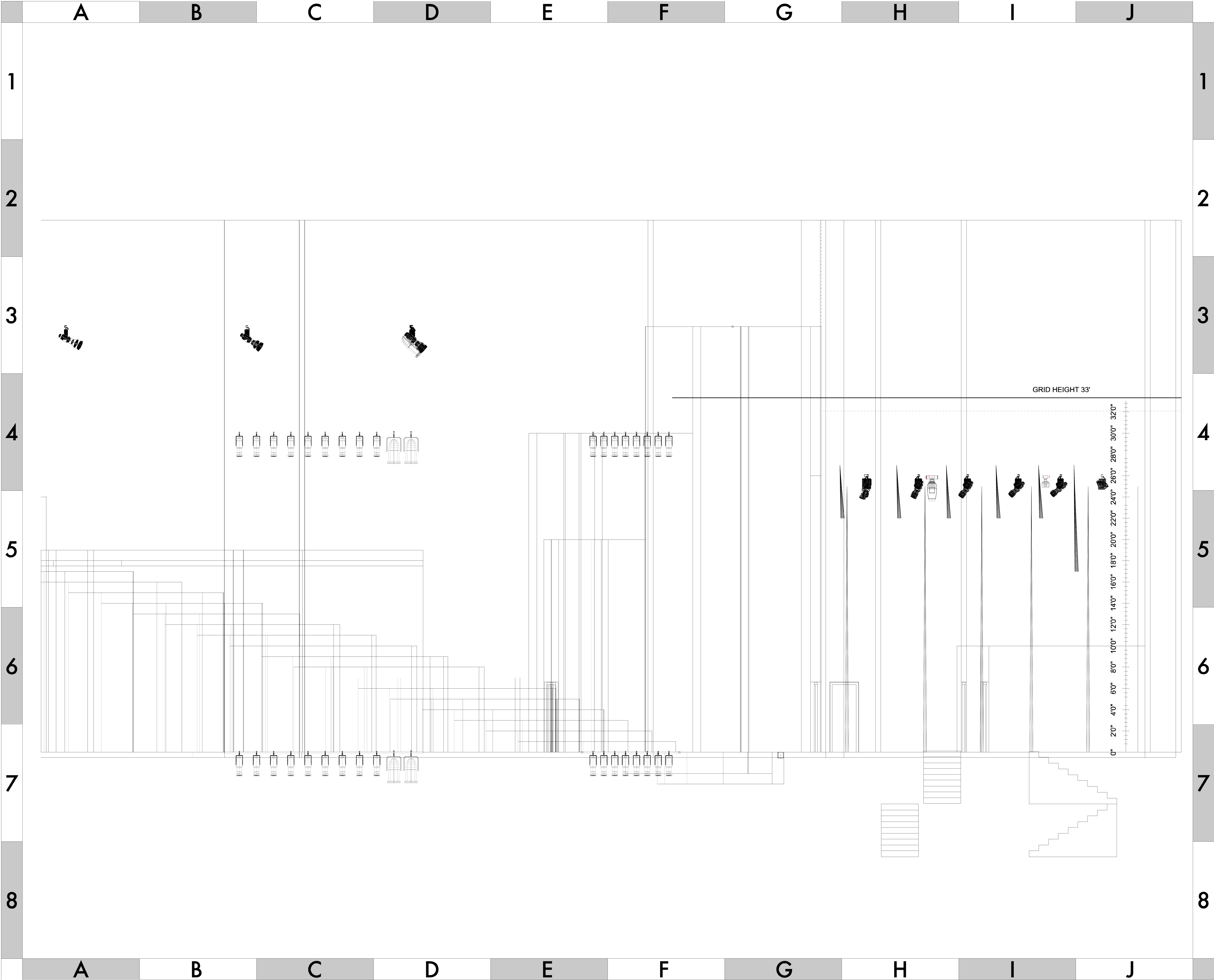
REV DATE:
6/1/2023

DRAWING #

1

of X

LIGHT PLOT



KEY

- | | | | |
|--|--------------------------|--|--------------------------|
| | Altman SS-Cyc 100 | | Martin Mac Aura |
| | NSI Colortran 5/50 10deg | | Martin MAC Viper Profile |
| | ETC Source4 10deg | | USITT Practical |
| | ETC Source4 14deg | | |
| | ETC Source4 19deg | | |
| | ETC Source4 26deg | | |
| | ETC Source4 36deg | | |
| | ETC Source4 PAR WFL | | |

LEGEND

- | | | |
|----------------|--------|-------------|
| COLOR | -----> | L202 + R119 |
| LENS SIZE | -----> | |
| UNIT NUMBER | -----> | 1 |
| DIMMER/ADDRESS | -----> | 888 |
| CHANNEL | -----> | 888 |

SHOW NOTES

VENUE NOTES

SCOTTSDALE ARTS

PRODUCTION STAFF

ZACH CIABURRI.....DIRECTOR OF PRODUCTION
DORANN MATSON.....PRODUCTION MANAGER
JJ HANSEN.....TECHNICAL THEATRE COORDINATOR
TYLER GODDARD.....HEAD LIGHTING ENGINEER
LUKE JACKSON.....HEAD AUDIO ENGINEER
GRACE DARLING.....STAGE MANAGER
LAURAN CONRAN.....PRODUCTION ASSISTANT

VIRGINIA G. PIPER THEATRE

SCALE:
unless otherwise noted

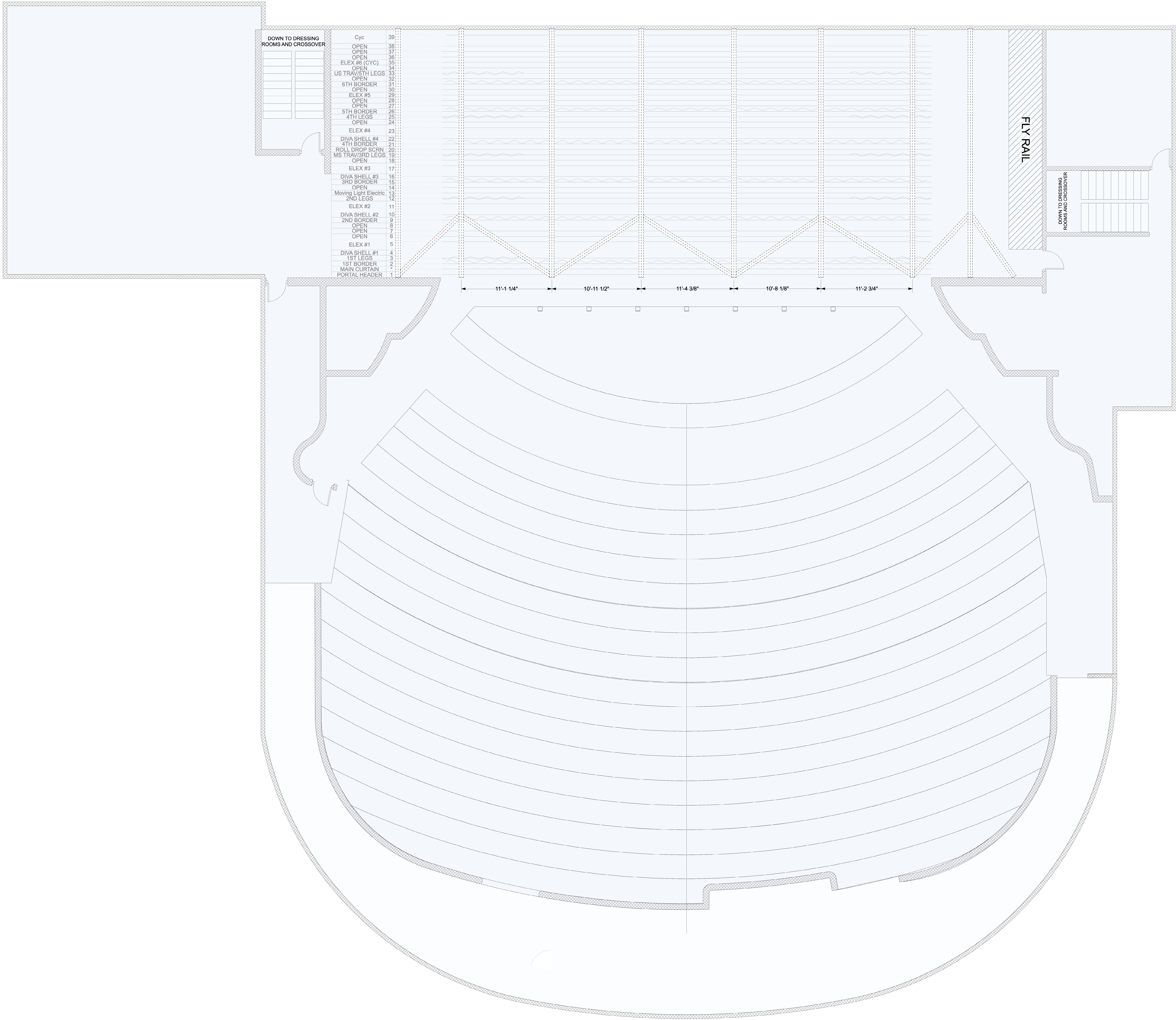
REV DATE:
6/1/2023

DRAWING #

1

of X

LIGHT PLOT



Light	
	Altman SS-Cyc 100
	NSI Colortran 5/50 10deg
	ETC Source4 10deg
	ETC Source4 14deg
	ETC Source4 19deg
	ETC Source4 26deg
	ETC Source4 36deg
	ETC Source4 PAR MFL
	ETC Source4 PAR WFL
Moving Light	
	GLP Impression X4
	Martin MAC Viper Profile
Typical	
Color Summary	

VIRGINIA G PIPER THEATRE

SCOTTSDALE CENTER FOR THE PERFORMING ARTS

REP LIGHTING PLOT and LINESET SCHEDULE

SCALE: 1/4" = 1'

DRAFTED BY: ZACH C

As Of: 1/23/2019

Plate **1** of 1

