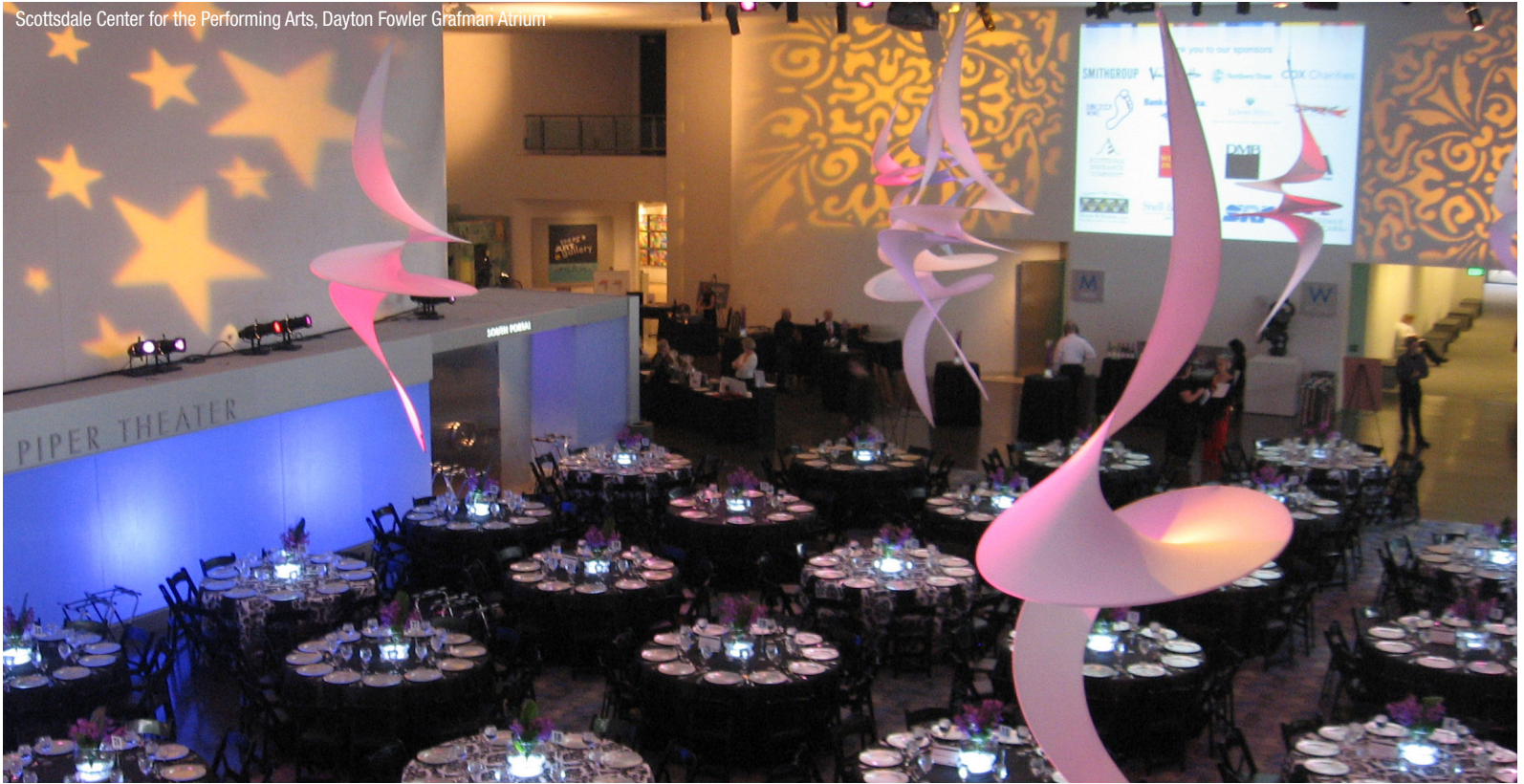




Facility Rentals

arts
scottsdale

Scottsdale Center for the Performing Arts, Dayton Fowler Grafman Atrium



360 Stage West



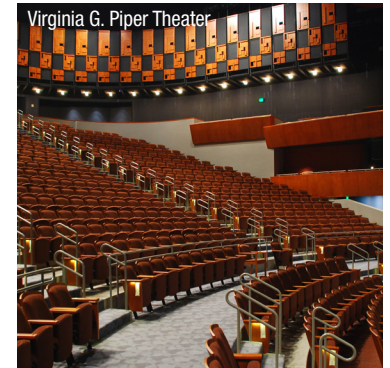
Dayton Fowler-Grafman Atrium



Dayton Fowler Grafman Atrium



Virginia G. Piper Theater





Scottsdale Arts' rental program provides opportunities for businesses, community organizations and individuals to host special events—from large trade shows, festivals, concerts, and theatrical productions to private meetings and wedding receptions—using the facilities and resources of Scottsdale Center for the Performing Arts, Scottsdale Museum of Contemporary Art (SMoCA), and Scottsdale Civic Center. Proceeds support the nonprofit Scottsdale Arts and the many arts programs it presents for the City of Scottsdale.

Contents

Scottsdale Center for the Performing Arts	3
Scottsdale Museum of Contemporary Art (SMoCA)	4
Outdoor Facility Rental Rates	6
Facility Rental Rates	8
Labor, Equipment, and Services	10
Preferred Caterers	12
Event Insurance	14
Weddings	16
Contacts	17

Scottsdale Center for the Performing Arts



Dayton Fowler Grafman Atrium



Center Space gallery



Dayton Fowler Grafman Atrium

Virginia G. Piper Theater

The gorgeous Virginia G. Piper Theater is fully equipped with the latest lighting and sound technology with maximum seating for 853.

Dayton Fowler Grafman Atrium

Designed for an impressive entrance, the spectacular 6,200-square-foot main lobby of Scottsdale Center for the Performing Arts is the perfect location for any event. With a flexible capacity that can accommodate 500 to 900 guests, the options are endless.

Stage 2

With seating for 137 guests, this small theater offers a comfortable, intimate atmosphere.

Mezzanine Lounge

With its unique location overlooking the Dayton Fowler Grafman Atrium, this space is ideal for receptions or business meetings for up to 120 guests.

Center Space gallery

Center Space is a 1,700-square-foot gallery. This space is suitable for receptions or gatherings for up to 120 people.



Virginia G. Piper Theater

Scottsdale Museum of Contemporary Art (SMoCA)



Scottsdale Museum of Contemporary Art



Skyspace



SMoCA Gallery

SMoCA

Scottsdale Museum of Contemporary Art is a unique and sophisticated setting for up to 300 guests, enhanced by SMoCA's cutting-edge art exhibitions and architecture.

Nancy and Art Schwalm Courtyard

With a large mural and two public artworks, SMoCA's courtyard is a beautiful setting for events with 50 or fewer people.

Skyspace

Created by internationally renowned artist James Turrell, the elliptical skyspace *Knight Rise* is an architectural installation that heightens the viewer's awareness of light, sky, and the activity of perception.

Invite SMoCA's curators to your event for a private exhibition tour and conversation.



Nancy and Art Schwalm Courtyard

Outdoor Facility Rental Rates



Marshall Gardens wedding ceremony venue only*

\$150/hour

West Bowl

Day Rate

\$2,000

Nonprofit Rate

\$1,700

West Bowl wedding ceremony venue only*

\$260/hour

360 Stage West

Day Rate

\$1,800

Nonprofit Rate

\$1,530

Central Lawn

Day Rate

\$2,000

Nonprofit Rate

\$1,700

360 Stage Center

Day Rate

\$2,000

Nonprofit Rate

\$1,870

Civic Center Memorial Lawn and Mayer Garden

Day Rate	Nonprofit Rate
\$150/hour	\$120/hour
(Max Capacity: 250)	

Civic Center West (includes West Bowl, Marshall Gardens, and Central Lawn)

Day Rate	Nonprofit Rate
\$7,000	\$6,000

East Bowl

Day Rate	Nonprofit Rate
\$3,300	\$2,800
(Max Capacity: 2,700)	

East Bowl Stage

Day Rate	Nonprofit Rate
\$2,700	\$2,000

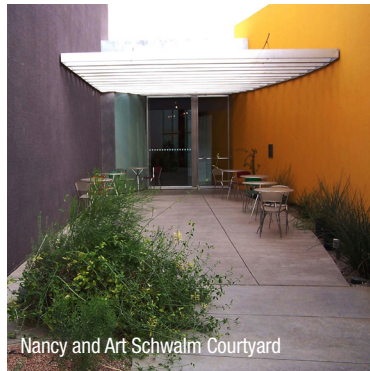
Entire Civic Center (includes all stages)

Day Rate	Nonprofit Rate
\$9,000	\$7,000
(Max Capacity: 7,800)	

*Tech Package Required For Stage Ops



Facility Rental Rates



Scottsdale Center for the Performing Arts

	Capacity	Day Rate	Nonprofit Rate
Virginia G. Piper Theater	853	\$1,650	\$1,430
Dayton Fowler Grafman Atrium	500–900	\$1,430	\$1,100
Stage 2	137	\$550	\$330
Mezzanine Lounge	30–120	\$330	\$110
Center Space gallery	75–120	\$550	\$330

Scottsdale Museum of Contemporary Art (SMoCA)

	Capacity	Day Rate	Nonprofit Rate
SMoCA	300	\$1,650	\$1,430
Schwalm Courtyard	50	\$550	\$440
Skyspace	24	\$22/person	\$22/person

Facility rates are subject to change and availability and do not include labor, equipment, and other expenses.

Events held in SMoCA or the Dayton Fowler Grafman Atrium during business hours must allow public access. Any events that require prohibiting public access must be scheduled when those facilities would normally be closed.

All bookings are scheduled within Scottsdale Arts' fiscal year, which runs July 1 through June 30.



Scottsdale Civic Center East Bowl. Photo by David Blakeman.

Labor, Equipment and Services



Event Labor

Facility Representative: \$40/hour

– Required to be scheduled from event load-in to load-out

Event Services Assistant: \$30/hour

Security: \$30/hour per security officer

Concessions: \$25/hour per bartender

House Staff: \$25/hour per house manager

– Required for events in the Virginia G. Piper Theater and Stage 2

Police: \$75–\$88/hour

Environmental Services: \$25/hour

Technical Labor

Stage Manager: \$30/hour

Lighting Engineer: \$35/hour

Audio-Visual Engineer: \$35/hour

Stagehand: \$25/hour

- All labor requires a four-hour minimum.
- A minimum of four technicians must be present for events in the Virginia G. Piper Theater and two technicians in Stage 2.
- Security staff is required for events held before or after normal business hours.
- Actual cost will be determined in the final post-event invoice.

Event Ticketing Services

- Public events are required to use Scottsdale Center for the Performing Arts' Ticketing, Admissions, and Sales (box office).
- All ticketed events are subject to:
 - 6% commission on gross ticket sales
 - 5% commission on credit card transactions

General Admission: \$125 set-up fee

Reserved Seating: \$250 set-up fee

Merchandise and Concessions

- All event-related merchandise is subject to a 20% commission from gross sales and 25% if Scottsdale Arts staff sells the merchandise. The renter is responsible for all sales tax.
- When using the Dayton Fowler Grafman Atrium for a trade show event, 10% of each non-food vendor's registration fee shall be paid to Scottsdale Arts by the renter.
- For outdoor events only, the renter is subject to a commission of \$15 per hour for each hour of operation for each food vendor.

Equipment Rates

Black Orchestra Chairs	\$1.60/each
Black Stackable Chairs	\$0.85/each
Dance Marley	\$195
Easel	\$8/each
Event Cans	\$17/each
Event Fencing	\$825
Follow Spot	\$105/each/day
Hazer (fog machine)	\$55
Internet Connection	\$358
Lectern	\$28–\$55/each
Lighting and Audio System - VGP Theater	\$1,100
Lighting and Audio System - VGP Theater (nonprofit)	\$880

Live Streaming Equipment	\$880*
Monitor System - VGP Theater	\$550
Music Stands	\$2.50/each
Piano—Steinway Grand	\$220/day
Piano - Upright	\$110/day
Piano Tuning	\$200
Pipe and Drape - Banjo	\$4.50/foot
Pipe and Drape - Velour	\$8.50/foot
Platform Risers - Atrium	\$38/each
Platform Risers - Stage	\$28/each
Portable DVD Player	\$28/each
Portable PA system (2 speakers)	\$165
Portable PA system (4 speakers)	\$275/each
Portable Television	\$110/each
Projector and Screen - Portable	\$165
Projector and Screen - VGP Theater	\$880
Stanchions - Chrome	\$22/each
Stanchions - White	\$11/each
Table w/ Linens	\$28/each
Video Switching Station	\$330
Wireless Microphone	\$82
SMoCA Lounge AV System	\$165
SMoCA Lounge Audio only	\$110
Rear Projector and Screen—VGP Theater	\$1,850*
Rear Projector and Screen—VGP Theater (nonprofit)	\$1,480*
Moving Lights Upgrade—VGP Theater	\$500*
Moving Lights Upgrade—VGP Theater (nonprofit)	\$300*
West Bowl/Central Lawn Audio Package	\$825
West Bowl/Central Lawn Lighting Package	\$350
East Bowl Audio Package	\$1,100–\$1,500
East Bowl Lighting Package	\$550

* may require additional technical labor

Preferred Caterers



All food served at events must be provided by one of the caterers on Scottsdale Arts' Preferred Caterers List.



ArizonaCatering.com

atlasta

AtlastaCatering.com



StraightToThePlate.com



MCulinary.com (Kosher catering only)

All alcoholic beverage services must be provided and served by our exclusive alcohol manager.

For these services, please contact Director of Events Jamie Prins at 480-874-4697 or JPrins@ScottsdaleArts.org.

All information is subject to change.

Bar and Beverage Packages

Spirits

Basic Cocktail	\$10/drink
Premium Cocktail	\$12+ /drink

Beer

Domestic Beer	\$6/bottle
Micro Brew	\$7/bottle
Imported Beer	\$7/bottle
Seltzer	\$8/bottle

Wines

Premium	\$12/glass
House	\$9/glass

Non-Alcoholic Beverages

Bottled Water	\$2/bottle
Soda	\$3/glass

- All hosted and cash bars require one (1) bartender per 75 guests.
- For large events, bartender and bar needs will be assessed based on the event's parameters and setup.
- Bartending services are billed at \$25 per hour per bartender, with a four-hour minimum.
- A minimum guarantee of \$350 per bar setup is required for hosted or cash bar service.

Additional Beverage Service Options

Tablesides Wine Service

House wine can be offered to the table starting at \$8 per glass (plus service charge and tax) and will be billed based on consumption. Upgraded wine selections are available at a per-case price. Please ask for our reserve wine list or make a special request.

Your selected caterer will be required to pour wine tableside with dinner and will charge accordingly for an appropriate number of staff. Usually one additional server per every 50 guests is recommended.

Passed Champagne Toast

- House champagne can be passed to your guests at \$9 per glass (plus service charge and tax) and will be billed based on consumption.
- Your selected caterer will provide and charge for staff to pass champagne.
- If catering is not required, wait staff can be provided at \$25 per hour per person.

Terms and Conditions

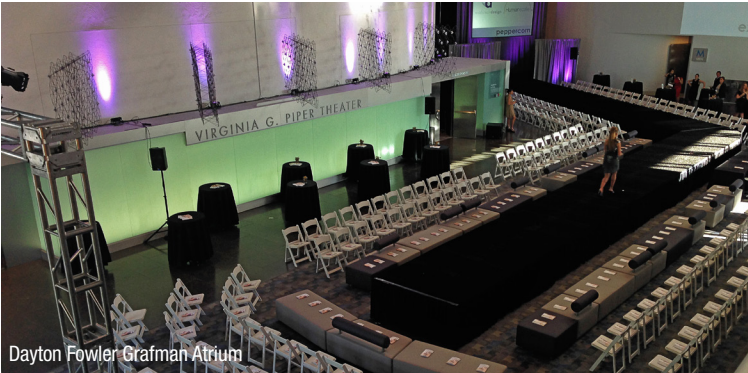
- In order to reserve bar services for your event, a 50% deposit is required at the time the order is placed.
- For hosted bar service, the deposit is based on total estimated charges. For "on consumption" bars, estimated charges are based on 2 alcoholic drinks per person. Final invoice will be based on actual consumption.
- A credit card must be obtained for all orders and will be held on file to guarantee payment for all outstanding balances.
- The final amount due will be charged to the credit card at the conclusion of the event.
- A customary 20% service charge will be added to all hosted beverage services.
- The final guest count must be confirmed 10 business days prior to the event to allow time for ordering product and scheduling staff.
- The guaranteed number or the actual attendance, whichever is greater, will be charged.
- Refund of deposits for hosted bars is subject to the cancellation policy outlined in terms and conditions.
- Charges will be based on the guaranteed attendance or the actual attendance, whichever is greater.

Event Insurance

Liability insurance is required for all rental events and must meet the following qualifications:

- Single-limit public liability insurance coverage.
- Minimum of \$1 million for indoor events and \$2 million for outdoor events.
- Insurance must cover bodily injury, death, property damage, and medical payment insurance in the amount of \$5,000.
- The insurance certificate must name Scottsdale Arts and the City of Scottsdale as additionally insured.
- Renter's insurance policy shall be effective from the beginning of the first load-in time until the last load-out time as indicated in the agreement.
- Renter shall provide a copy of the certificate of insurance as proof to Scottsdale Arts no later than 14 business days before the event.

The insurance certificate must name Scottsdale Arts and the City of Scottsdale as additionally insured. Renter's insurance policy shall be effective from the beginning of the first load-in time until the last load-out time as indicated in the agreement. The renter will provide a copy of the certificate of insurance as proof to Scottsdale Arts no later than 14 business days before the event.



Dayton Fowler Grafman Atrium



Dayton Fowler Grafman Atrium



Dayton Fowler Grafman Atrium





Weddings

Perfect for everything from intimate ceremonies to elaborate receptions, Scottsdale Civic Center features beautifully landscaped outdoor locations and unique indoor locations at Scottsdale Center for the Performing Arts and Scottsdale Museum of Contemporary Art (SMoCA).

For additional information, please visit ScottsdalePerformingArts.org/venues or contact the rentals manager at 480-874-4604.

Contact

Event Staff

Facility Rentals Manager

Matt Fisher

MFisher@ScottsdaleArts.org

480-874-4604

Director of Events

Jamie Prins

JPrins@ScottsdaleArts.org

480-874-4697

Ticketing, Admissions, and Sales Manager

Luis Payan

LuisP@ScottsdaleArts.org

480-874-4690

Production Manager

Dorann Matson

DMatson@ScottsdaleArts.org

480-874-462

Phone and Web

Administration

480-874-4610

Fax

480-874-4699

Box Office

480-499-TKTS (8587)

Web

ScottsdaleArts.org

Locations

Scottsdale Center for the Performing Arts

7380 E. Second St.

Scottsdale Museum of Contemporary Art

7374 E. Second St.

Scottsdale Civic Center

3939 N. Drinkwater Blvd.

Mailing Address for All Venues

7380 E. Second St.

Scottsdale, AZ 85251

Business Hours

Scottsdale Center for the Performing Arts

Monday: Closed

Tuesday–Saturday: 11 a.m.–6 p.m.

Sunday: Noon–5 p.m.

Scottsdale Museum of Contemporary Art

Monday & Tuesday: Closed

Wednesday: 11 a.m.–5 p.m.

Thursday: 11 a.m.–7 p.m.

Friday– Sunday: 11 a.m.–5 p.m.

Museum hours are subject to change throughout the season. Please check SMOCA.org for current information.



Sun & Sounds
FREE CONCERT SERIES
SCOTTSDALE CIVIC CENTER
SUPPORTING PARTNER

Scottsdale Civic Center 360 Stage West